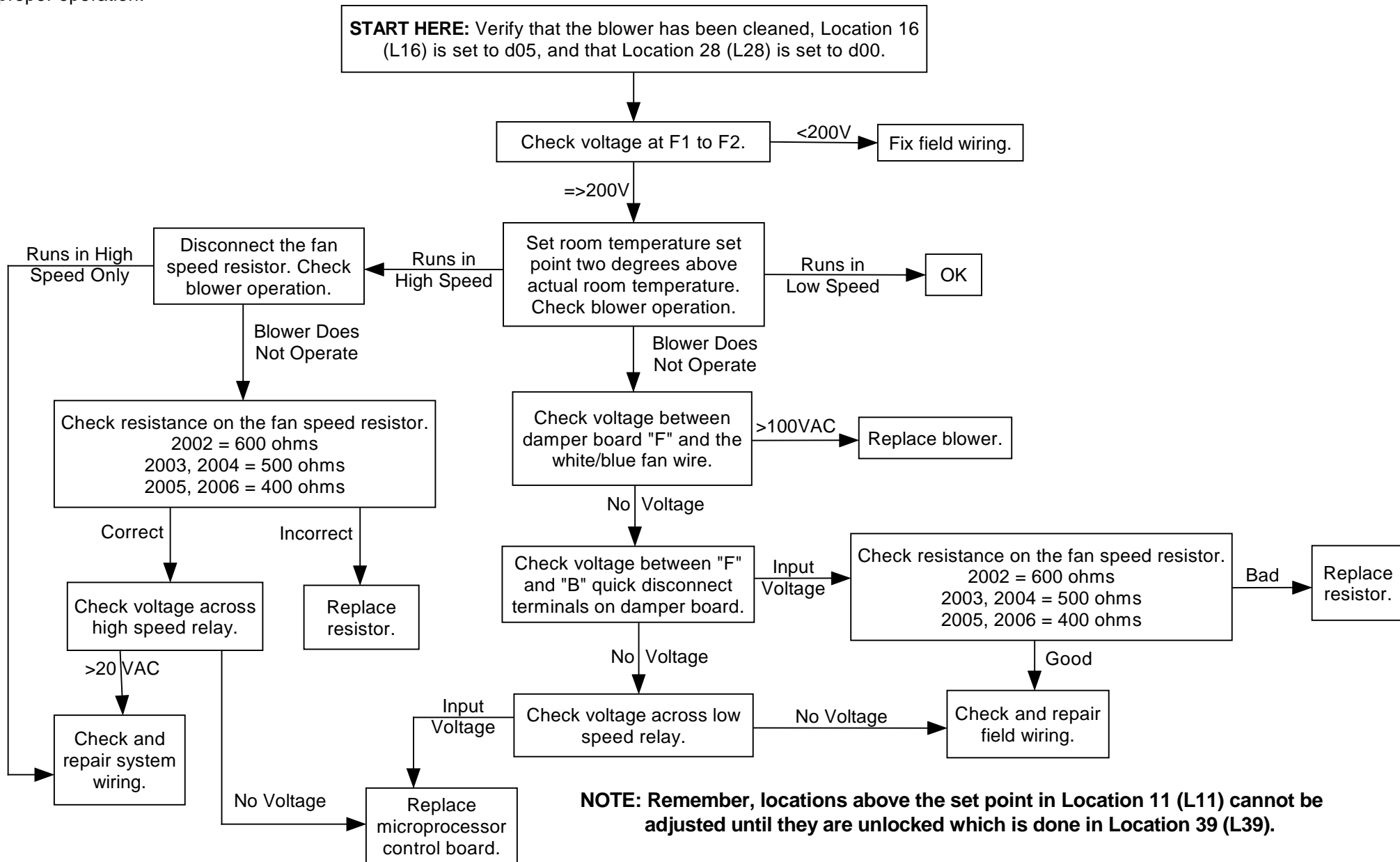


# Blower Runs in High Speed Only - 2000 Series (208V/240V Heaters Only)

The blower on a 2000 Series heater will operate in low or high speed. From the factory, if the room temperature drops below the room temperature set point, the blower will run in low speed. Once the temperature in the room drops 5 degrees below set point, then the blower will start running in high speed.

A blower that has a build-up of dirt and debris can appear to only operate in one speed. Before using this flow chart, it is important to clean the blower to ensure proper operation.



**\*\* Voltage between damper board "F" and white blue fan wire should be between 100 and 190.**